



**SPENCER JAMES**  
RESIDENTIAL

8 Hartlepool Court | London E16 2RL  
T: +44 (0) 20 7474 3636  
E: mail@spencer-james.co.uk  
www.spencer-james.co.uk



**\*\* One Double Bedroom \*\***

**\*\* Spacious Living Room \*\***

**\*\* Allocated Parking \*\***

**\*\* Walking Distance to Barking Station \*\***

**\*\* Lease Remaining: 102 Years \*\***

**\*\* Lift Access \*\***

**\*\* EPC TBC / Council Tax Band: C \*\***

**\*\* Floor Area: 623 Sq/Ft (57.9 Sq/M) \*\***



**Cambridge Road, Barking, IG11**

**Offers in Excess of £215,000 (Leasehold)**



**PRICED TO SELL!** This substantial well presented one bedroom apartment with allocated secure parking is the ideal investment opportunity. Internally the property boasts a spacious open plan lounge/diner and kitchen, large double bedroom and bathroom, in addition to a spacious hallway with ample storage.

Further benefits include lift access, telephone entry, 102 year lease and allocated parking. The property is also located within a stones throw of Barking Station and town centre.

### **Accommodation Comprises:**

#### **Entrance Hall**

Storage Cupboard, carpeted flooring, radiator.

#### **Open Plan Living Room and Kitchen** *23' 7" x 14' 8" max (7.18m x 4.47m)*

Three double glazed windows to front aspect, cupboard housing boiler and water tank, two radiators, carpeted flooring.

#### **Kitchen Area**

Fitted with a range of eye and base level units with roll top work surfaces incorporating a stainless-steel sink, integrated cooker, hob, extractor and fridge freezer. Space for washing machine. Vinyl flooring.

#### **Bedroom** *18' 7" x 11' 2" maximum (5.66m x 3.40m)*

Double glazed window to front aspect, radiator, carpeted flooring.

#### **Bathroom**

Three-piece suite comprising a bath with shower attachment, low level wc and pedestal hand wash basin. Vinyl Flooring.

#### **Exterior**

Secure parking, lift access, telephone entry.

#### **Lease Details**

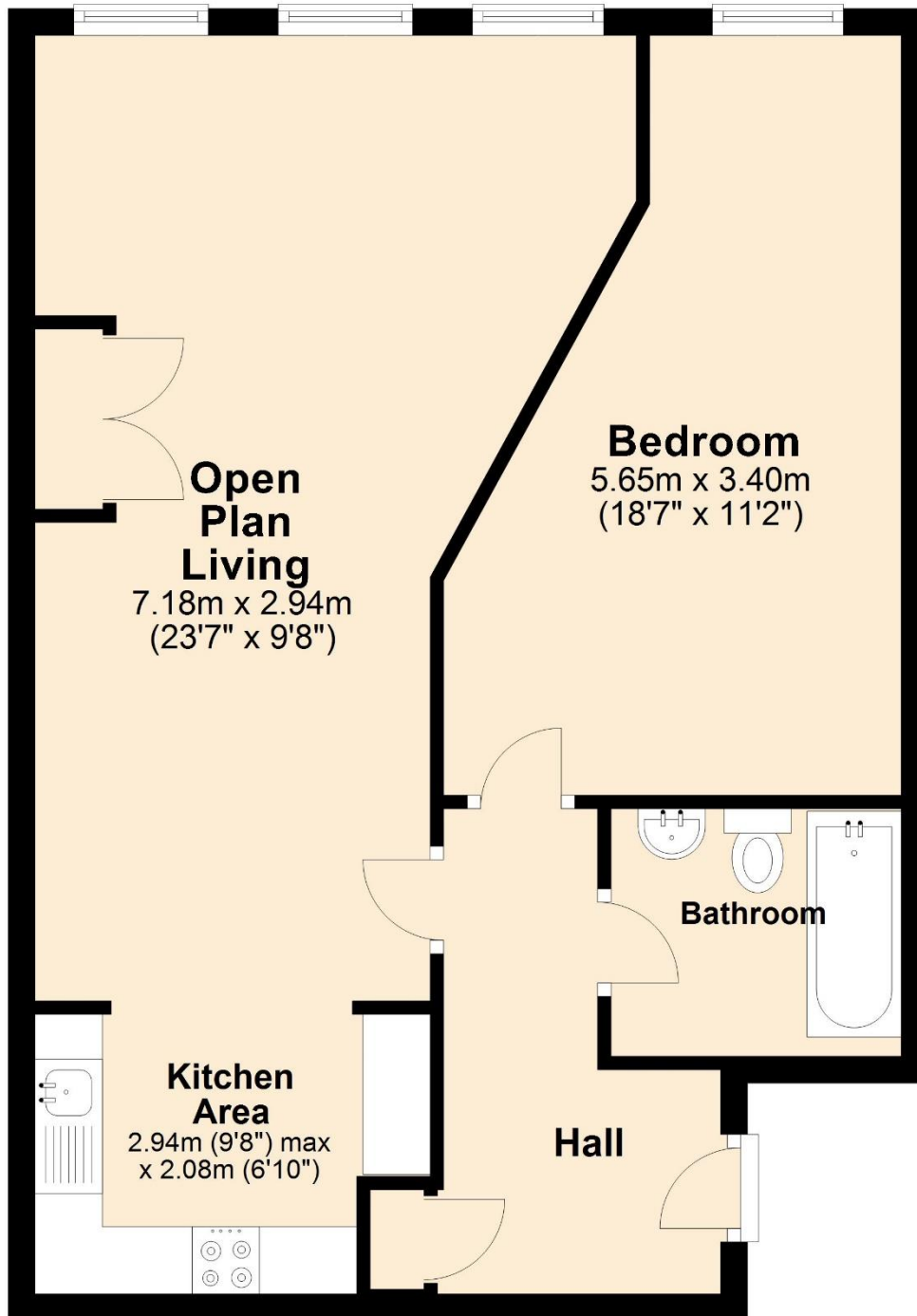
Lease Remaining: 102 Years

Service Charge: £2800 per annum

Ground Rent: £250 per annum

## Second Floor

Approx. 57.9 sq. metres (623.6 sq. feet)



Total area: approx. 57.9 sq. metres (623.6 sq. feet)





SPENCER JAMES  
RESIDENTIAL





SPENCER JAMES  
RESIDENTIAL

